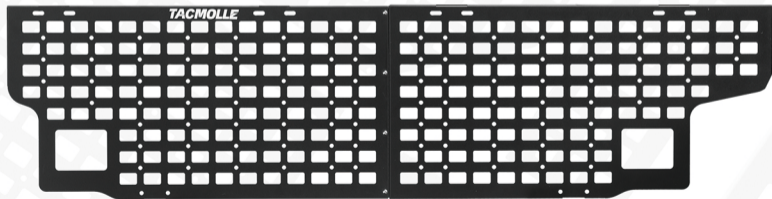


# TACMOLLE

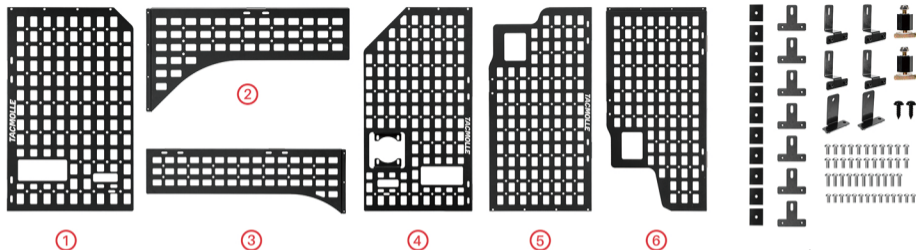
PRODUCT INSTALLATION MANUAL

TRUCK BED MOLLE PANELS



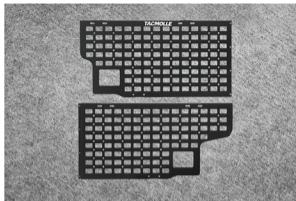
20161/20162

# PACKAGE INCLUDED

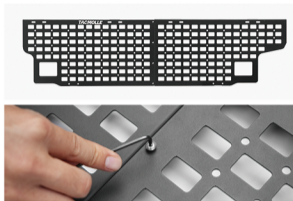


Note: This manual includes two installation methods: **Middle Side Panel** and **Three Side Panels**. Please read the relevant sections for proper installation.

# INSTALLATION INSTRUCTIONS - Middle Side Panel



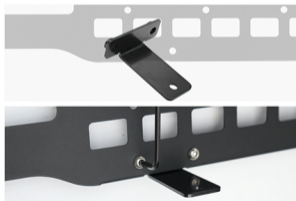
1. Prepare all parts and tools needed for installation.



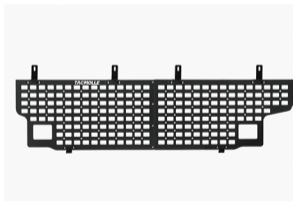
2. Connect ⑤ and ⑥, securing them with four ⑫.



3. As shown, attach ⑧ using ⑬ and tighten securely.



4. Connect ⑨ at the bottom using ⑬ and tighten securely.



5. Connection appearance.



6. Ready for vehicle installation, place four ⑩ into the slide rail.

# INSTALLATION INSTRUCTIONS - Middle Side Panel



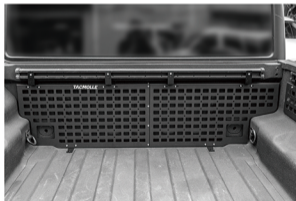
7. Insert the assembly for ⑤ and ⑥, adjust the position of the ⑩, and then secure with ⑭.



8. Ensure the panel is correctly positioned, and make sure ⑨ is on a flat surface.

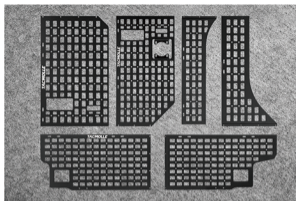


9. Use self-tapping screws ⑮ to connect the panel to the vehicle body.

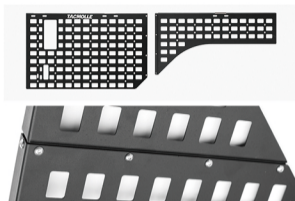


10. Confirm that the installation on panel is stable and does not wobble.

# INSTALLATION INSTRUCTIONS - Three Side Panels



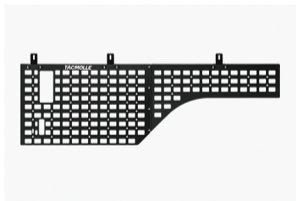
1. Prepare all parts and tools needed for installation.



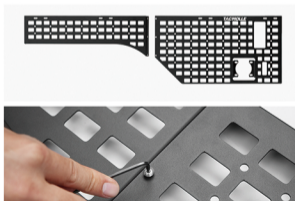
2. Connect ① and ②, securing them with five ⑫.



3. As shown, attach ⑦ using ⑬ and tighten securely.



4. Connection appearance.

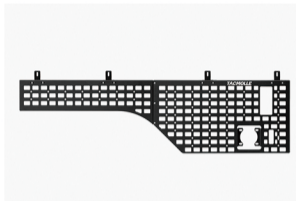


5. Connect ③ and ④, securing them with four ⑫.

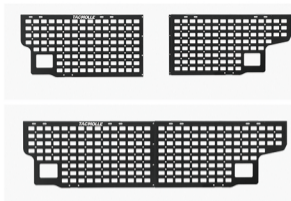


6. As shown, attach ⑦ using ⑬ and tighten securely.

# INSTALLATION INSTRUCTIONS - Three Side Panels



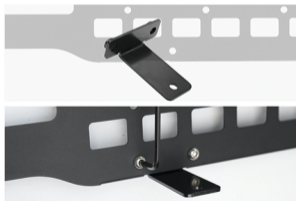
7. Connection appearance.



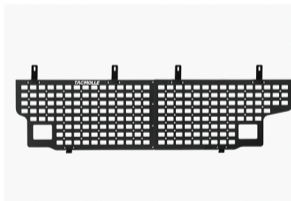
8. Connect ⑤ and ⑥, securing them with four ⑫.



9. As shown, attach ⑧ using ⑬ and tighten securely.



10. Connect ⑨ at the bottom using ⑬ and tighten securely.



11. Connection appearance.



12. For the driver side installation, place three ⑩ into the slide rail.

# INSTALLATION INSTRUCTIONS - Three Side Panels



13. Insert the auxiliary ⑪ into the lower-left corner; hold the screw with one hand and tighten the black component with the other.  
Note: Remove the screw at the end of ⑪ and set it aside.



16. For the passenger side installation, place four ⑩ into the slide rail.



14. Insert the assembly for ① and ②, adjust the position of the ⑩, and then secure with ⑭.



15. As shown, use a wrench to tighten and secure screw.



17. Check the lower-right corner for a power outlet; if not, insert the auxiliary ⑪ and follow the same installation steps.



18. If there is a power outlet, remove four original screws and set them aside for later use.

# INSTALLATION INSTRUCTIONS - Three Side Panels



19. Insert the assembly for ③ and ④, adjust the position of the ⑩, and secure with ⑭.



20. As shown, use the four original screws to tighten and secure it.



21. For the middle section installation, place four ⑩ into the slide rail.



22. Insert the assembly for ⑤ and ⑥, adjust the position of the ⑩, and secure with ⑭.



23. Ensure the panel is correctly positioned, then use self-tapping screws ⑮ to connect the panel to the vehicle body.



24. Confirm that the installation on the three-side panels are stable and does not wobble.



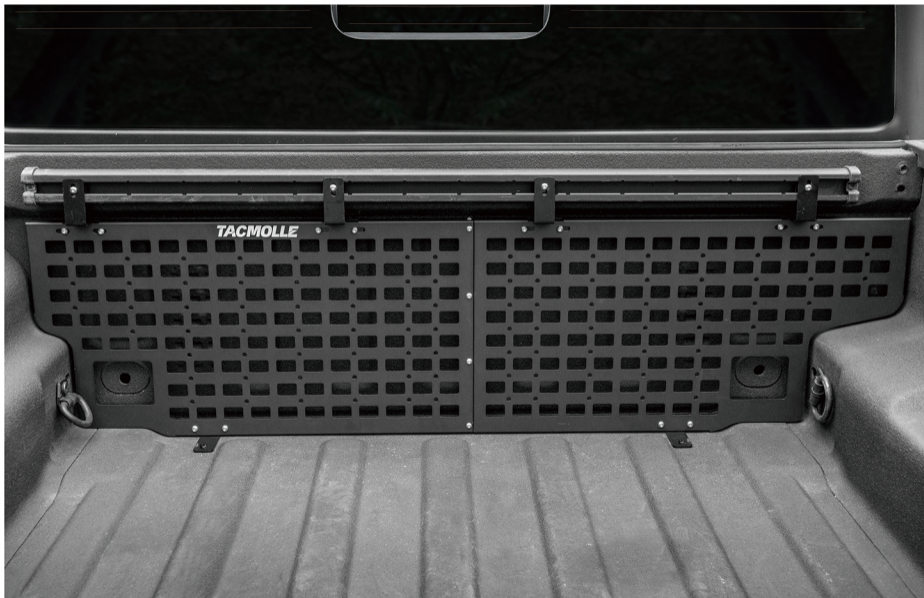
# PRODUCT DEMONSTRATION



# PRODUCT DEMONSTRATION



# PRODUCT DEMONSTRATION



***TACMOLLE***