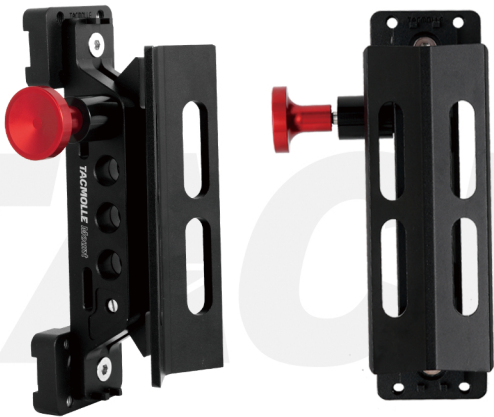


TACMOLLE

PRODUCT INSTALLATION MANUAL



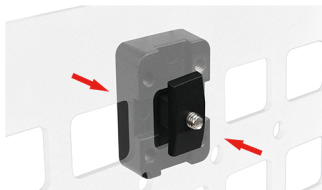
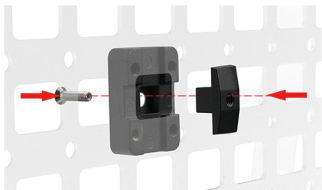


Fire Extinguisher Mount

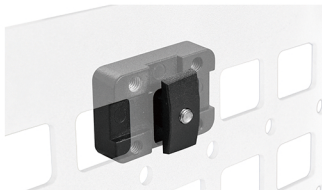
PRODUCT FEATURES

1. Made from high-strength aluminum alloy for durability and corrosion resistance.
2. Quick-release design ensures easy access and retrieval.
3. Highlighted with a red pin for visual reminder.
4. Comes with two mounting clamps to securely hold the extinguisher body, offering slip-resistant and shock-absorbing features.
5. Includes dual insertable mounting bases for secure attachment, designed to fit MOLLE panels with 1-inch tactical slots for easy installation and removal.
6. Compatible with fire extinguishers of 3-4 inches in diameter.

INSTALLATION PRINCIPLE



Tighten the MOLLE panel by adjusting the screws.



Dual Locking Method:

Loosen the screws until the T-shaped block separates from the mounting base. Adjust the direction of the T-shaped block (choose between horizontal or vertical orientation), then insert the T-shaped block into the mounting base and tighten to secure.

INSTALLATION INSTRUCTIONS



1. Pull the red pin.



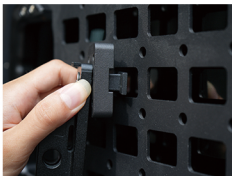
2. Pull the upper part of the right-side component outward.



3. Lift the upper part upward to separate it.



4. Use a hex wrench to install the mounting base.



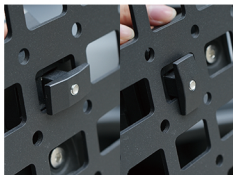
5. Insert the T-shaped blocks of the mounting base into the tactical slots sequentially.



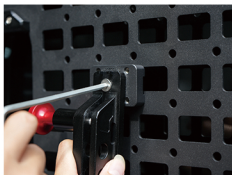
6. Choose either horizontal or vertical orientation to secure the mounting base (see Figure 7).

NEXT →

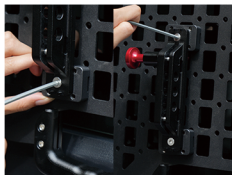
INSTALLATION INSTRUCTIONS



7. Refer to the illustration demonstrating how the T-shaped blocks interlock with the MOLLE panel.



8. Use a hex wrench to lightly tighten and adjust the position of the fire extinguisher mount.



9. Once positioned correctly, tighten the screws sequentially to complete the installation.



10. Secure the fire extinguisher using the mounting clamps. (fire extinguisher sold separately)



11. Insert the fire extinguisher diagonally into the mount while simultaneously pulling out the red pin.



12. Finally, push the entire assembly into the mount to complete the installation.

INSTRUCTIONS FOR USE



1. Pull the red pin.



2. Pull the upper mount backward.



3. Just pull the mount upwards.



4. Product demonstration.

TACMOLLE