

# TACMOLLE

## PRODUCT INSTALLATION MANUAL



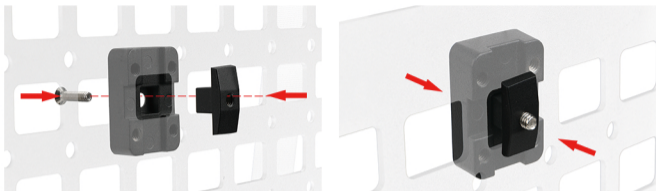


**GAS CAN MOUNT**

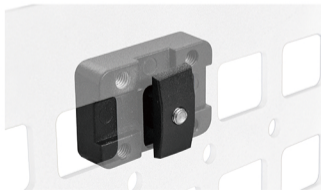
# PRODUCT FEATURES

1. Made from high-strength aluminum alloy for durability and corrosion resistance.
2. Features a T-shaped lock buckle design to reduce vibrations and improve stability.
3. Includes a twist-lock mechanism for effortless use and retrieval.
4. Includes dual insertable mounting bases for secure attachment, designed to fit MOLLE panels with 1-inch tactical slots for easy installation and removal.
5. Compatible with circular perforated gas cans.

# INSTALLATION PRINCIPLE



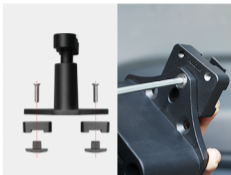
Tighten the MOLLE panel by adjusting the screws.



## Dual Locking Method:

Loosen the screws until the T-shaped block separates from the mounting base. Adjust the direction of the T-shaped block (choose between horizontal or vertical orientation), then insert the T-shaped block into the mounting base and tighten to secure.

# INSTALLATION INSTRUCTIONS



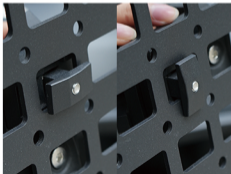
1. Use a hex wrench to assemble the gas can mount and two mounting base components.



2. Insert the T-shaped blocks of the mounting base into the tactical slots sequentially.



3. Choose either horizontal or vertical orientation to secure the mounting base (see Figure 4).



4. Refer to the illustration demonstrating how the T-shaped blocks interlock with the MOLLE panel.



5. Use a hex wrench to lightly tighten and adjust the position of the gas can mount.



6. Once positioned correctly, tighten the screws sequentially to complete the installation.

# INSTRUCTIONS FOR USE



1. First, secure the gas can mount in place.



2. Insert the gas can into the mount.



3. Ensure the lock buckle is fully visible.



4. Twist the lock buckle clockwise to securely fasten the gas can.

# PRODUCT DEMONSTRATION



***TACMOLLE***