

TACMOLLE

PRODUCT INSTALLATION MANUAL

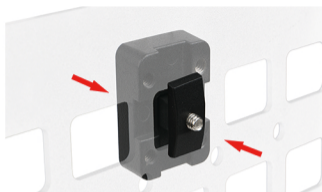
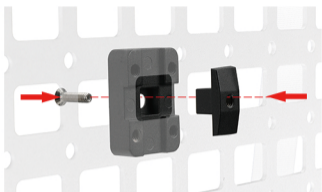


FIRE EXTINGUISHER MOUNT

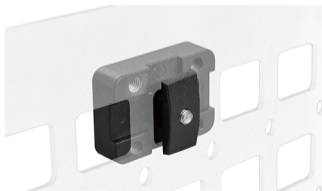
PRODUCT FEATURES

1. High-strength aluminum alloy construction for exceptional durability, corrosion resistance, and robustness.
2. Unique design with a red pin for visual reminder.
3. Tactical hole mounting system for easy installation and removal.
4. Dual snap-on base for secure attachment, compatible with a wide range of tactical panels.
5. Equipped with two mounting clamps to secure the extinguisher body, providing slip-resistant and shock-absorbing capabilities.
6. Quick-release design for easy use and retrieval.
7. Compatible with different types and sizes of fire extinguishers.

INSTALLATION PRINCIPLE



By adjusting the screws, the tactical panel is tightened.



For vertical and horizontal fixation method:

loosen the screws until the square column separates from the square hole, rotate the square column (choose the desired vertical or horizontal orientation), and after adjustment, place the square column into the square hole and tighten it.

INSTALLATION INSTRUCTIONS



1. Pull out the red pin.



2. Pull the upper portion of the right-side component outward.



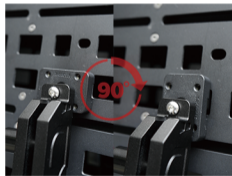
3. After pulling out the upper portion, lift it upwards to separate.



4. Use a hex wrench to install the mounting base.



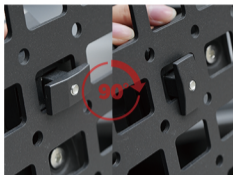
5. Choose either horizontal or vertical orientation to secure the fire extinguisher mount. Insert the square column compression blocks into the tactical holes sequentially.



6. Rotate the base 90° in either direction to secure the mount position.

NEXT →

INSTALLATION INSTRUCTIONS



7. Illustration demonstrating the interlocking principle between the square column and the tactical panel.



8. Use a hex wrench to lightly tighten (adjust the position of the fire extinguisher mount)



9. Once adjusted, tighten the screws in sequence to complete the installation.



10. Secure the fire extinguisher in place using the mounting clamps (fire extinguisher needs to be purchased separately).



11. Insert the fire extinguisher diagonally into the base mount while simultaneously pulling out the red pin.



12. Finally, push the entire assembly into the mount to complete the installation.

USER INSTRUCTIONS



Pull out the red pin.



Pull the upper mount backward.



Just pull the mount upwards.



EFFECT DEMONSTRATION

EFFECT DEMONSTRATION



TACMOLLE